

# PC Software User's Guide

---

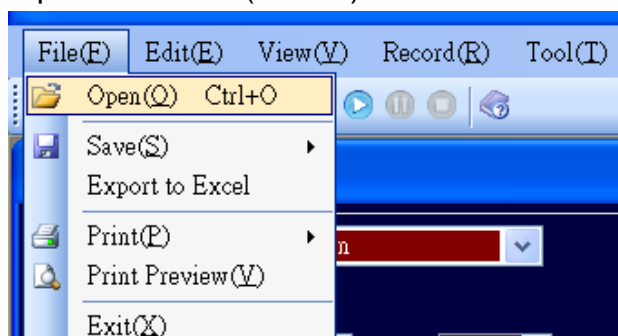
## ***Functions***

1. File
  2. Edit
  3. View
  4. Record
  5. Tools
  6. Windows
  7. Help
-

## 1. File

### 1.1 Open

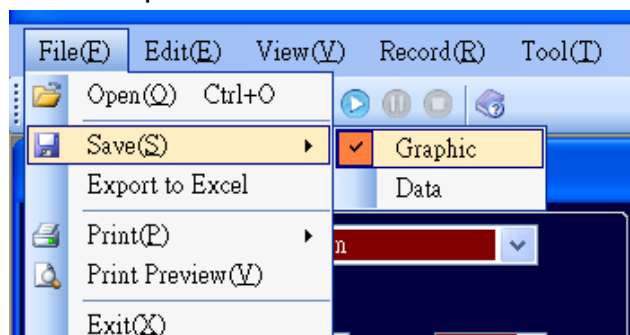
Open saved file ( \*CSV )



### 1.2 Save

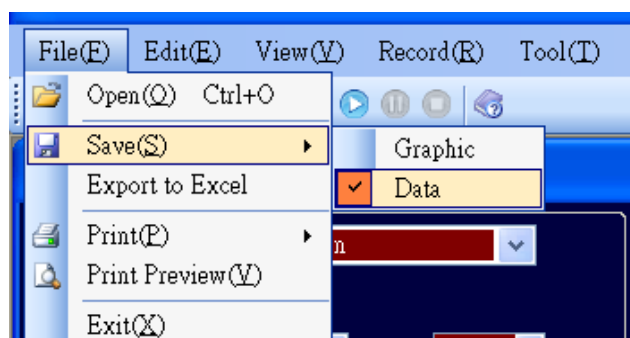
#### 1.2.1 Graphic

Save Graphic

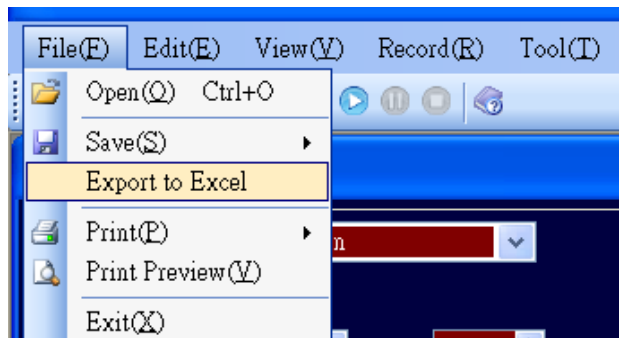


#### 1.2.2 Data

Save data in Grid window in CSV format



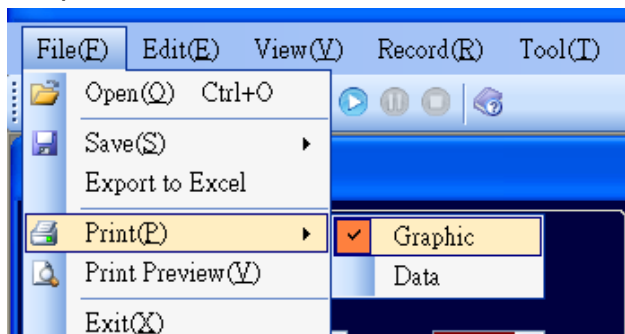
### 1.3 Export to Excel



Export data in Grid window to the Microsoft Excel (.xls) file

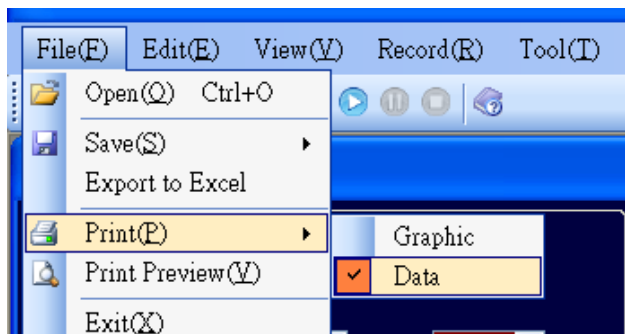
### 1.4 Print

#### 1.4.1 Graphic



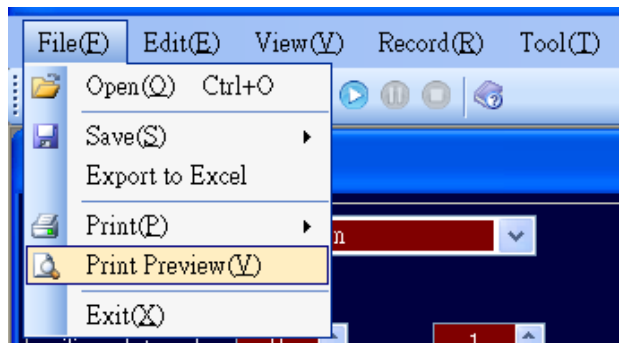
Print Graphic

#### 1.4.2 Data



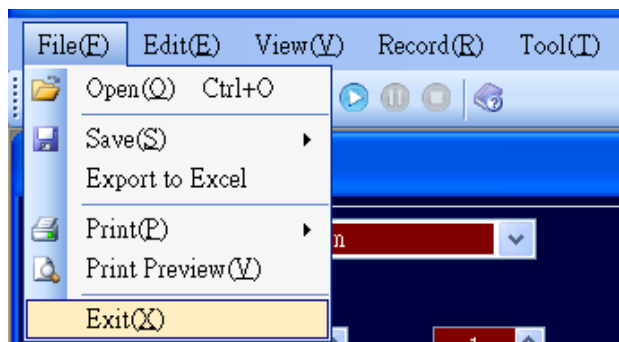
Print Grid data

## 1.5 Print View



Print layout view

## 1.6 Exit



Gets you out of this program

---

## 2. Edit

### 2.1 Clear Record



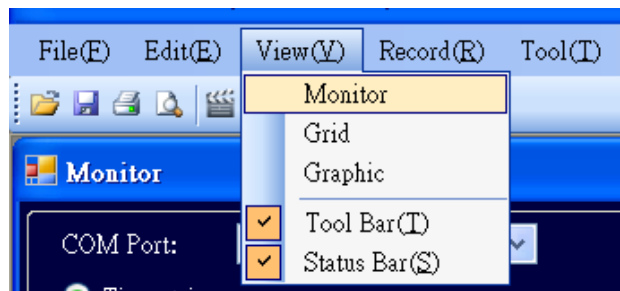
Clear the data in Grid and Graphic window.

---

## 3. View

### 3.1 Monitor

To maximize the Monitor window to the whole screen



### 3.1.1 Timer trigger

Set the time interval to record  
reading automatically

### 3.1.2 STD

Set the standard reading and unit



### 3.1.5 Manual trigger

Press Trigger (F12) to record  
reading once

### 3.1.3 USL & %

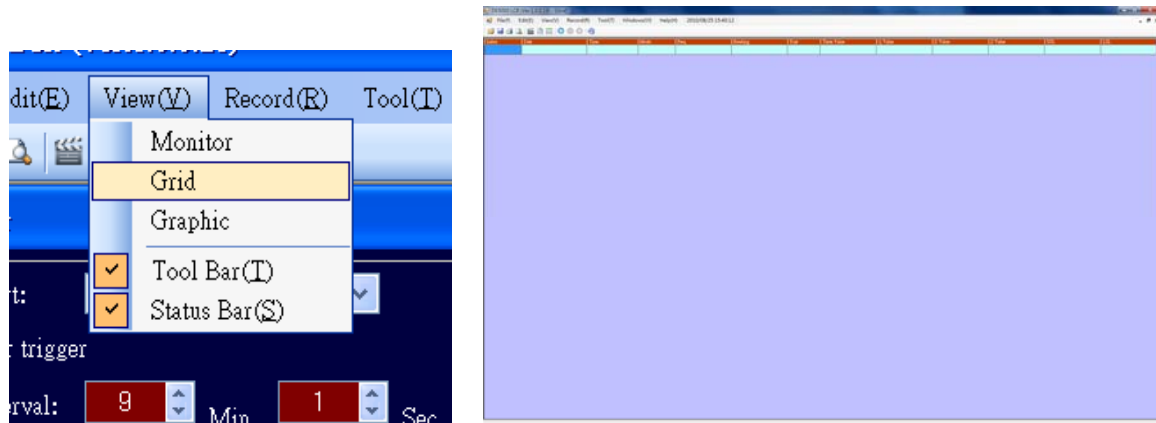
To set the upper limited reading and percent of error

### 3.1.4 LSL & %

To set the lower limited

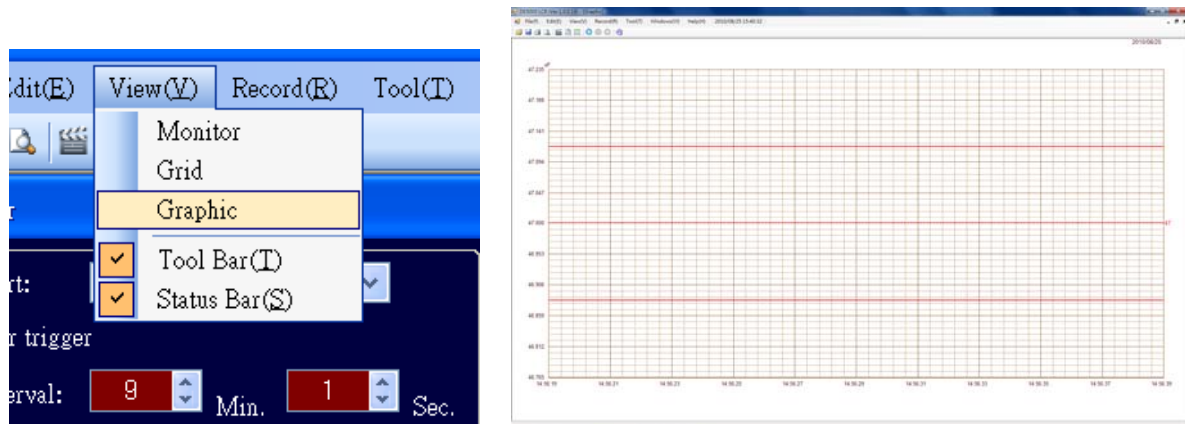
### 3.2 Grid

To maximize the Grid window to the whole screen

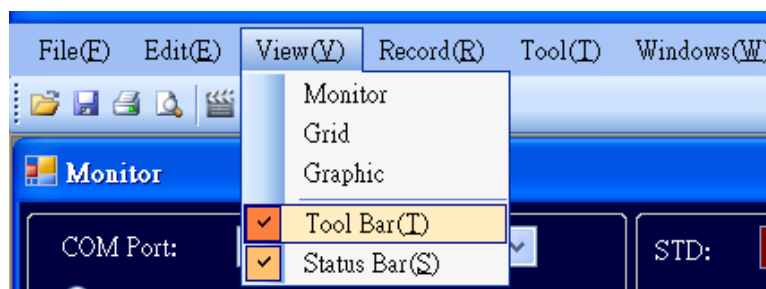


### 3.3 Graphic

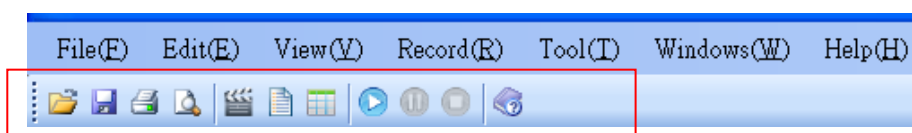
To maximize the Graphic window to the whole screen



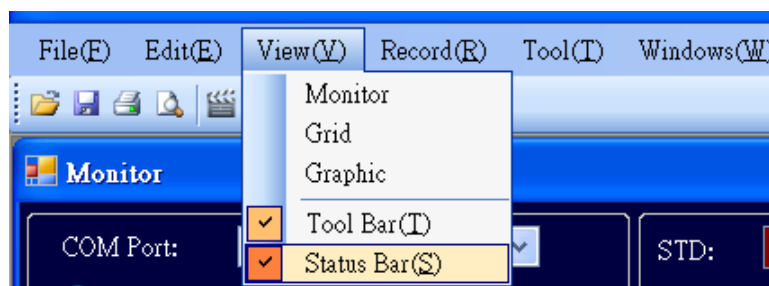
### 3.4 Tool Bar



Display (select) or hidden (not select )Tool Bar



### 3.5 Status Bar

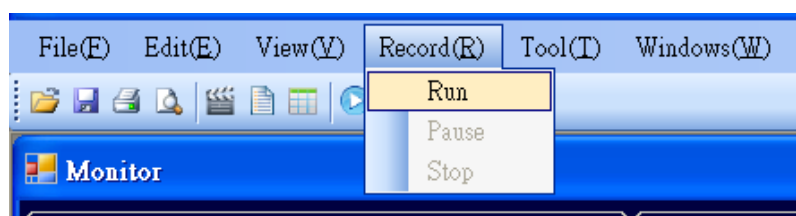


Display ( select ) or hidden ( not select ) Status Bar

---

## 4. Record

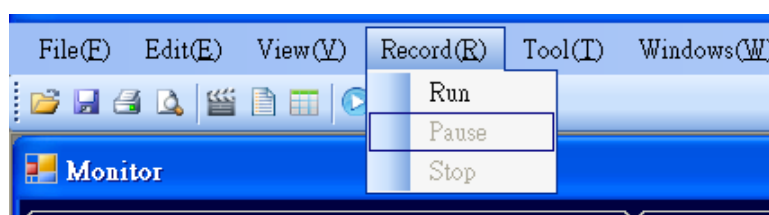
### 4.1 Run



Connect the COM port setting in the Monitor window to transfer the measuring data to PC and display

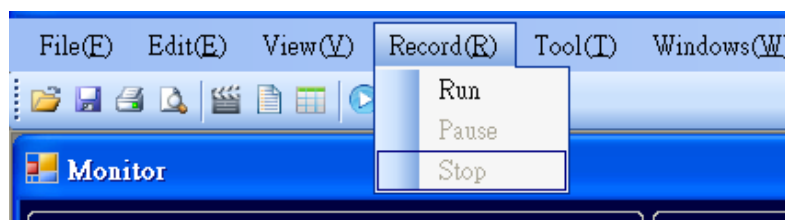
Based on the trigger setting (timer trigger or manual trigger) to transfer the measuring data to show on Grid window and transform into graphic in Graphic window

### 4.2 Pause



Pause recording and update the data. Press “Run” to resume and update the data.

## 4.3 Stop



Disconnecting with DE-5000 instrument to stop recording and updating the measuring data. Press “Run” to clear the data and re-start to record and update.

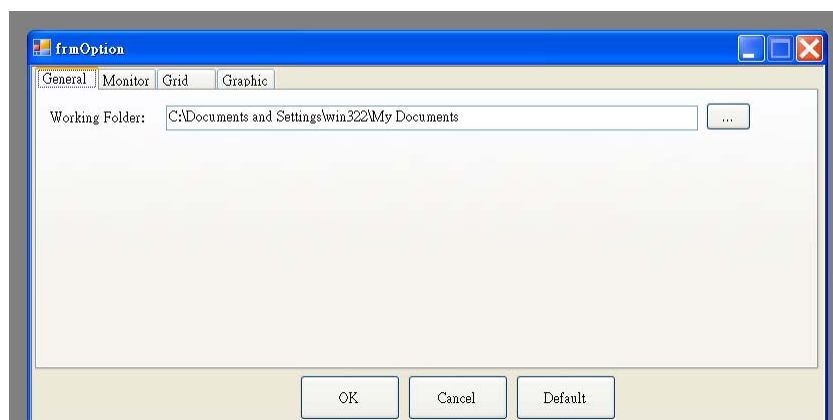
---

## 5. Tools

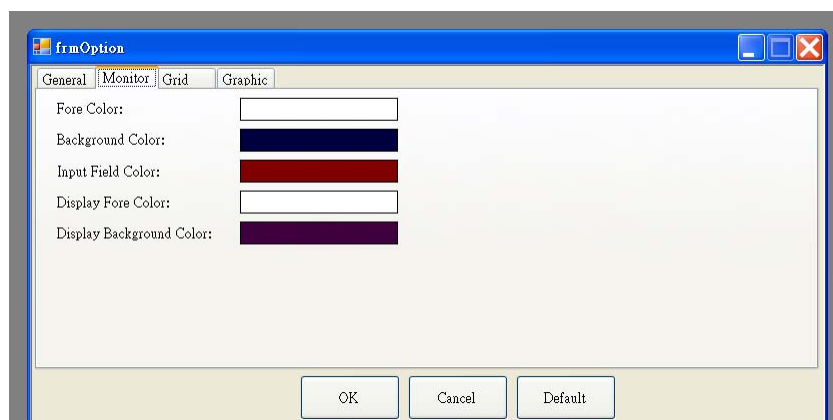
### 5.1 Option



- Set up the file position

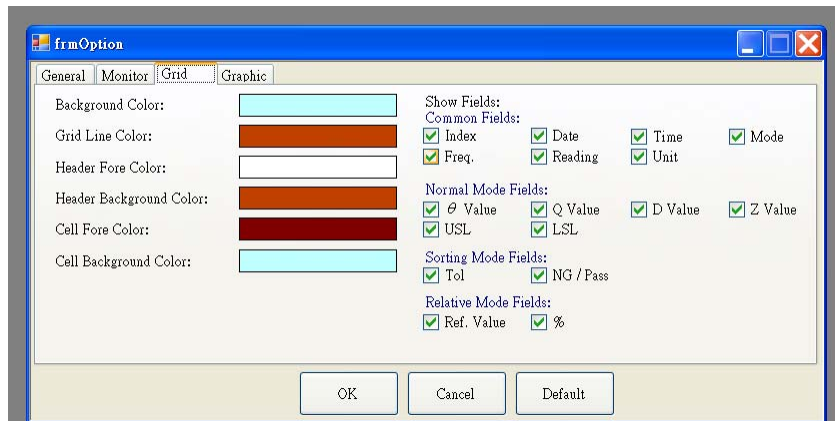


- Set up the window color

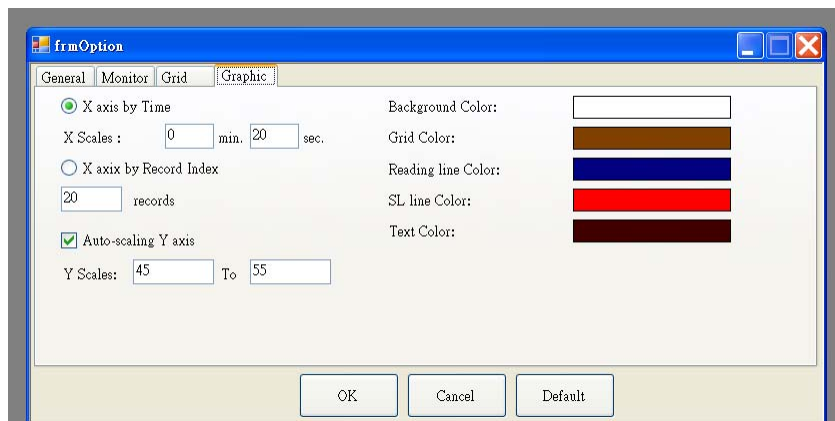


- Set up the grid





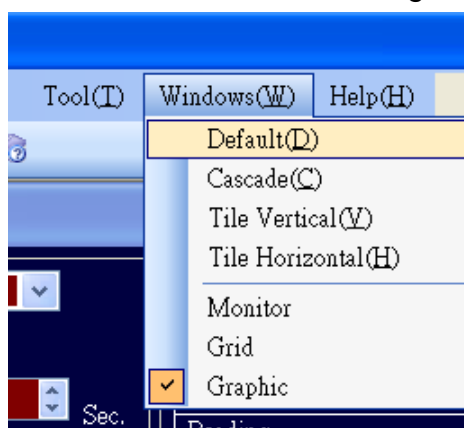
- Set up the graphic scale



## 6. Windows

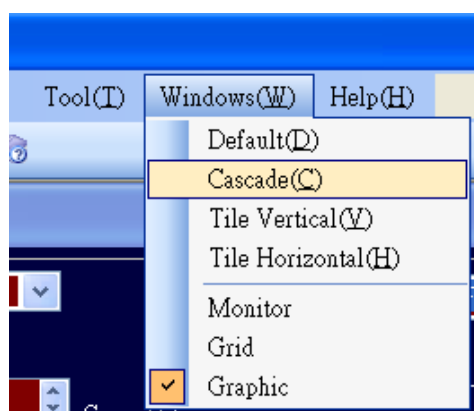
### 6.1 Default

Resume to the default setting for Monitor, Grid and Graphic window



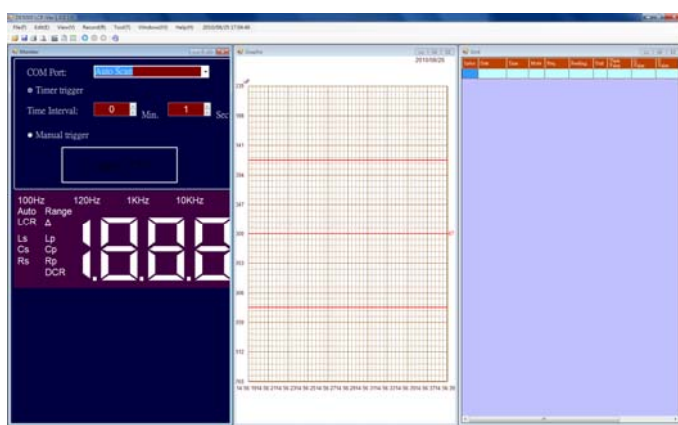
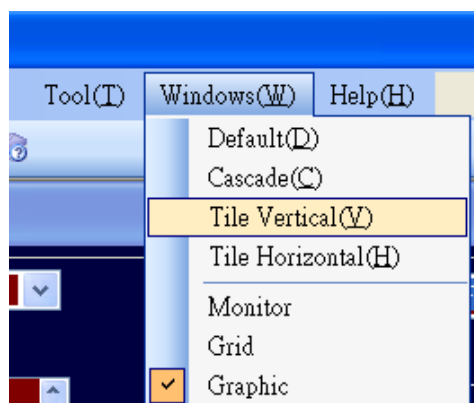
## 6.2 Cascade

Array windows in cascade way when they are in “restore” and “maximize” window mode



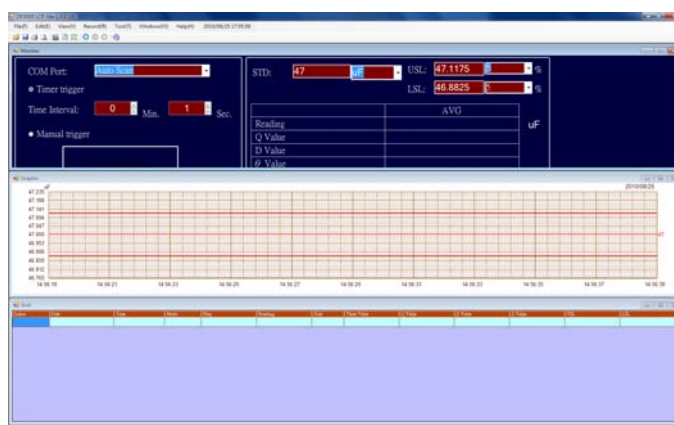
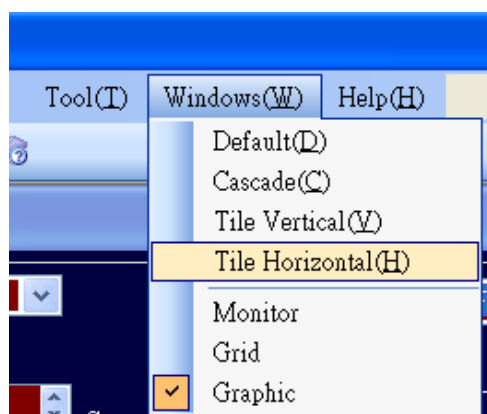
### 6.3 Tile Vertical

Array windows in Tile Vertical way when they are in “restore” and “maximize” window mode.



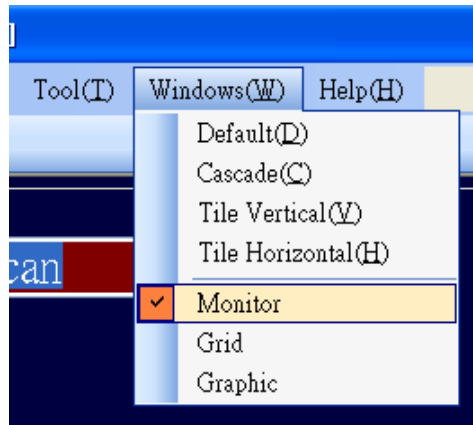
## 6.4 Tile Horizontal

Array windows in Tile Horizontal way when they are in “restore” and “maximize” window mode



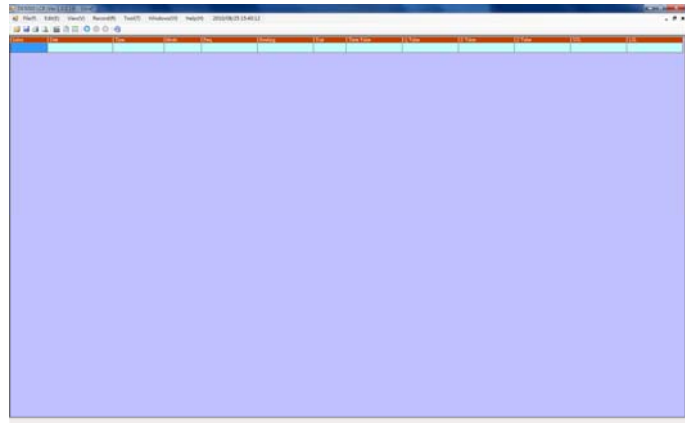
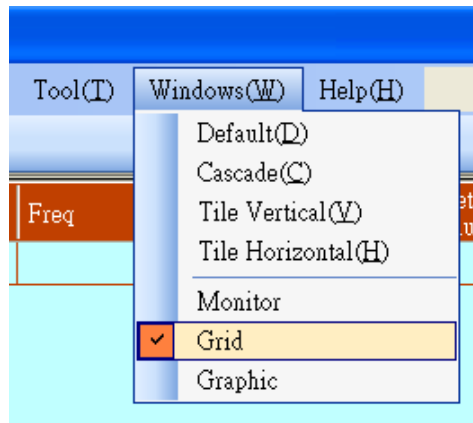
## 6.5 Monitor

To maximize the Monitor window to the whole screen



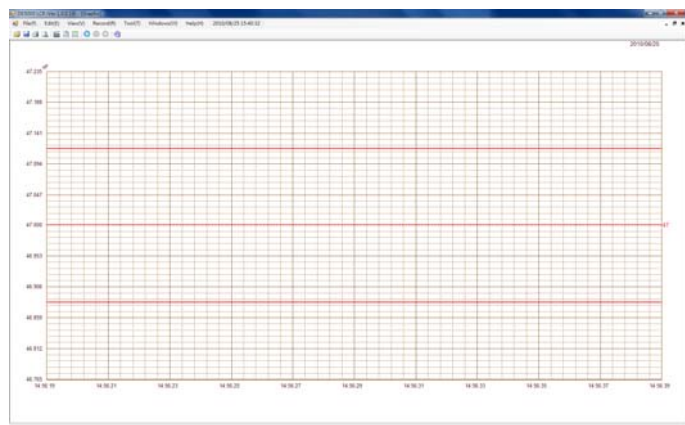
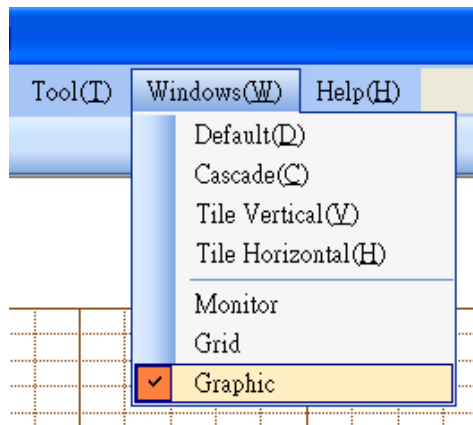
## 6.6 Grid

To maximize the Grid window to the whole screen



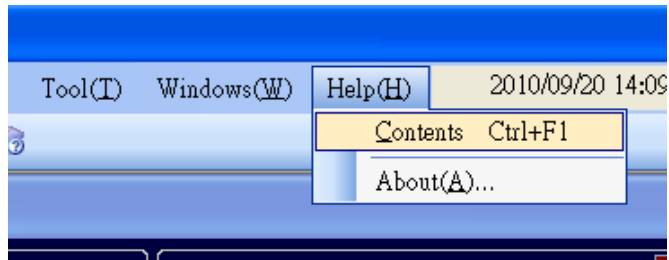
## 6.7 Graphic

To maximize the Graphic window to the whole screen



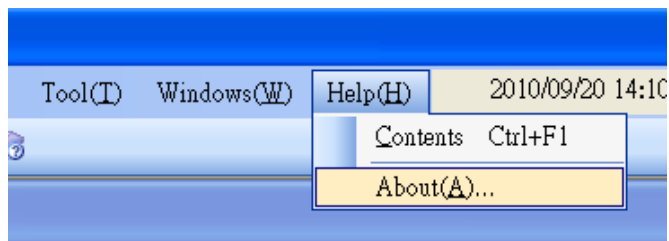
## 7. Help

### 7.1 Contents



Display the User's Guide

### 7.2 About



About Software info