

Multiformat, Multistandard Portable Waveform Monitor

WFM2300 Datasheet



The WFM2300 Portable Video Waveform Monitor provides an ideal solution for video installation and maintenance applications with an integrated high-brightness, low-power consumption LED backlit display in a convenient portable form factor. This versatile instrument can operate with an internal battery and DC input through an AC-DC converter unit.

Key features

- Portable Instrument that is Ideal for Field Production Setup and Troubleshooting
- Coax SDI Eye pattern measurement including eye amplitude, rise/fall time and overshoot measurements as well as Tektronix jitter waveform display
- Operates with Internal, Rechargeable, and Replaceable Battery Unit; External Recharger Kit and a Battery Unit for Replacement is available as an option
- Optical SDI Input and Output compliant to SMPTE297 (Option SFP)
- Coaxial Cable simulation / margin test loop for secure system installation

- One SDI Input and one MULTI Input with Multiformat, Multistandard Support
 - The MULTI input can be configured as SDI, AES or LTC input
 - Dual Link SDI format support is a standard feature
 - Upgradeable to include 3G-SDI (Level A and Level B) format support (Option 3G)
- 3G/HD/SD Color Bar and Pathological Signal Generator with Genlock and Moving Picture / Circle for Troubleshooting Signal Paths and Equipment (Note: Option 3G is required for 3G-SDI signal generation through Coax cable and Optical interface (Option SFP))
- Comprehensive Audio Monitoring tool
 - Up to 16 channel Embedded AES/EBU Audio
 - Multichannel Surround Sound ¹ Display and Flexible Lissajous Display
 - Audio Loudness meter (Option LOUD)
 - Dolby metadata decode and peak level metering (Option DBE)
 - Dolby E Guard Band meter with user-defined limits (Option DBE)
- AES Audio Test Tone Generator for Embedded and AES Output
- Ability to Display Waveform of External Reference Signal and LTC Signal for Quick Diagnosis of the Potential Issues in Sync and Time Distribution System
- Tektronix-patented Diamond and Arrowhead Displays for Color Gamut Compliance Monitoring
- Comprehensive Data Monitoring helps to Quickly Resolve Difficult Content Quality and Reliability Issues (Option DATA)
 - Simultaneous CEA708/608 Closed Caption monitoring; Teletext and OP47 subtitle monitoring
 - Detect and decode ANC data including AFD, WSS, Video Index, TSID, V-Chip, Broadcast Flag/CGMS-A, VITC, LTC, and ANC TC
 - ARIB STD-B35/B37/B39, TR-B22, and TR-B23 support
 - ANC Data Inspector and SDI Data Analysis display helps troubleshoot ANC data and SDI data problems

¹ Audio Surround Sound Display licensed from Radio Technische Werksütten GmbH and Co. KG (RTW).

- Variety of Monitoring Displays
 - Tektronix-patented Timing and Lightning displays makes facility and interchannel timing easy
 - Waveform display of external reference (Black Burst or Tri-Level Sync)
 - Extensive alarms, status reporting, and error logging for 10,000 events simplifies error correction tasks
 - Voltage and Timing Cursor for precise measurement
 - User-definable Safe Area Graticules and AFD Graticule facilitate editing and format conversion tasks
- Unmatched Display Versatility
 - Flexible Quad Tile display tailored to various application needs to increase productivity
 - Full Screen mode that maximizes display size for precise adjustments
 - Thumbnail Picture for content verification
- Unmatched Usability
 - 32 presets for quick recall of instrument settings
 - USB port enables easy transfer of presets, screenshots, and error log
 - Internal speaker and headphone port for easy monitoring of audio channels
 - Intuitive menu structure and context-sensitive help
 - High-brightness display with crisp, high-resolution LED backlight, ideal for indoor and outdoor usage
 - SNMP capability facilitates centralized monitoring and control
 - Super lightweight and low power consumption design for portable, battery-powered applications

Applications

- Field Production Setup including Installation and Maintenance Troubleshooting
- System Check Tool in Distribution and Broadcast
- Portable Engineering Tool in Manufacturing

WFM2300 waveform monitor

Standard configuration provides multiformat support for HD-SDI (SMPTE 292), SD-SDI (ITU-R BT.601), and Dual Link (SMPTE 372) signal formats. The instrument provides automatic format detection, and with Option 3G supports Level A and Level B SMPTE 425/424 formats. The SMPTE297 optical input/output through a SFP transceiver module is optionally available.

The Eye and Jitter measurements available in the WFM2300 can do the SDI physical measurement up to 3 Gbps with Option 3G. The cable simulator/stress capability helps the engineer to ensure that the signal quality on a cable has enough margin to the point to start increasing the error rate.

Audio monitoring support for up to 16 channels of Embedded AES/EBU Audio provides a variety of audio level bar monitoring, multichannel surround sound display¹, and flexible Lissajous display. With Option DBE, the Dolby E metadata analysis and bar meter of the peak level data in metadata are provided. Also, an internal speaker or headphone port can be used for easy compliance verification of digital audio without the need for an additional piece of equipment.



This instrument provides the reliability of the Tektronix waveform monitors family in a portable, basic monitoring product. The WFM2300 offers uncompromised monitoring quality with sharp CRT-like traces, patented Gamut displays, picture thumbnail, display freeze, and an error log for 10,000 events for efficient content compliance verification.

- Video Monitoring Standards and Formats
 - 3G-SDI (Level A and Level B) – Option 3G
 - High Definition SDI
 - Standard Definition SDI
 - Dual Link (4:2:2, 4:4:4, alpha channel, 10 bit, 12 bit)
 - SMPTE297 optical interface (Option SFP)
- Color Gamut Monitoring
 - Arrowhead Display
 - Diamond and Split Diamond Displays

- Digital Audio Support
 - 16-channel Digital AES/EBU (Embedded)
 - AES/EBU Input and Output
 - Audio Bar Displays
 - Lissajous Display
 - Surround Sound Display¹
 - AES Test Tone Generation for Embedded and AES Output
 - Dolby E metadata Analysis, Peak level bar meter with metadata, no decode (Option DBE)
 - Loudness meter (Option LOUD)
- Measurement and Analysis
 - Simultaneous CEA708/608 Closed Caption Monitoring; Teletext and OP47 Subtitle Monitoring – Option DATA
 - SDI Digital Data Analysis – Option DATA
 - ANC Data Inspector – Option DATA
 - Color Bar and Pathological Signal Generation with 16-channel Embedded Audio and Moving Test Signal

Ease of use

The intuitive user interface provides backlit buttons and online help. 32 user-configurable presets allow users to recall commonly used configurations tailored to your personal work practices. These presets can be transferred to and from other units (same model) using the USB port. An Ethernet port allows for easy download of screenshots and the Error Log.



See and Solve with Tektronix displays

The “See and Solve” displays in Tektronix video monitors simplify video monitoring tasks such as calibration, error detection, and content correction allowing the user to detect errors at a glance and troubleshoot them efficiently.

Tektronix displays offer the sharpest CRT-like trace quality for clear waveform monitoring with the look and feel of an analog display. The familiar video waveform display can show SD/HD/3G-SDI signals in RGB, YPbPr, YRGB, or pseudo composite. Signal components can be displayed in either Parade or Overlay mode. Cursors within the waveform display allow precise measurement of Voltage and Time to be made. The vector display offers user-selectable graticules, color targets (75% or 100%), and color axis.

With several sweep rates and easy control of vertical gain and horizontal magnification, you can efficiently monitor and measure video waveform parameters.

Specialized displays provide summarized, yet comprehensive reports of alarms, session, and status of content. Powerful displays such as Video Status show a condensed view of error statistics, signal format, presence of ancillary data, and more. These Tektronix-exclusive displays simplify monitoring tasks by providing important content information at a glance.

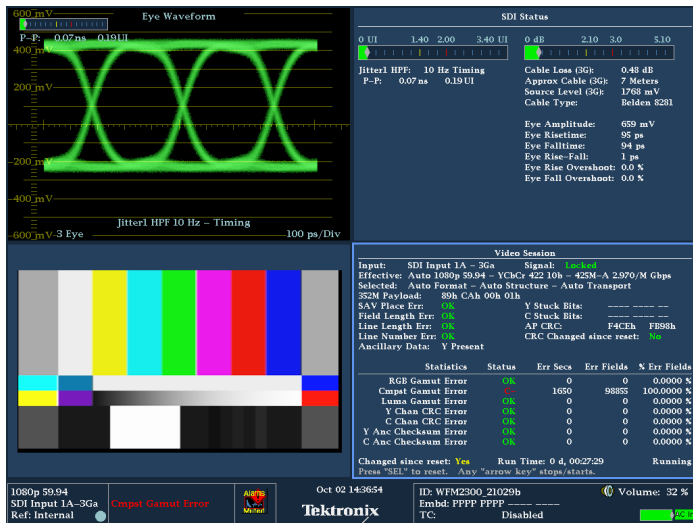
Errors in the displays can automatically be logged in the Error Log and provided as a report.

Advanced physical layer measurements - in a portable platform

The WFM2300 portable platform offers the physical-layer signal measurements suitable for Installation and Maintenance applications. When equipped with Option 3G, the WFM2300 can perform 3G-SDI eye pattern display, jitter measurements, and cable length measurements.

The WFM2300 provides unique capabilities such as reporting jitter levels above 1 UI and providing various jitter filters from 10 Hz to 100 kHz for SD/HD/3G-SDI signals. An easy-to-interpret gauge provides direct readout for jitter measurements. Users can configure timing jitter, alignment jitter or other jitter filter to effectively isolate the sources of jitter.

The SDI Status display summarizes key signal parameters such as signal strength, cable loss, and estimated cable length measurements. With FlexVu™, users can display the jitter value and cable parameter measurements to help quickly diagnose and resolve problems related to SDI timing jitter or cable attenuation.



3G-SDI monitoring.

The infinite persistence mode of the waveform monitor can also be used to more easily view the eye opening of the physical-layer signal. In addition, the WFM2300 can also perform automated eye amplitude, automated rise/fall time, automated overshoot measurement, and provide jitter waveform display to view jitter related to line and field rates. All of these capabilities help engineers in the field to detect and diagnose signal quality problems quickly and efficiently.

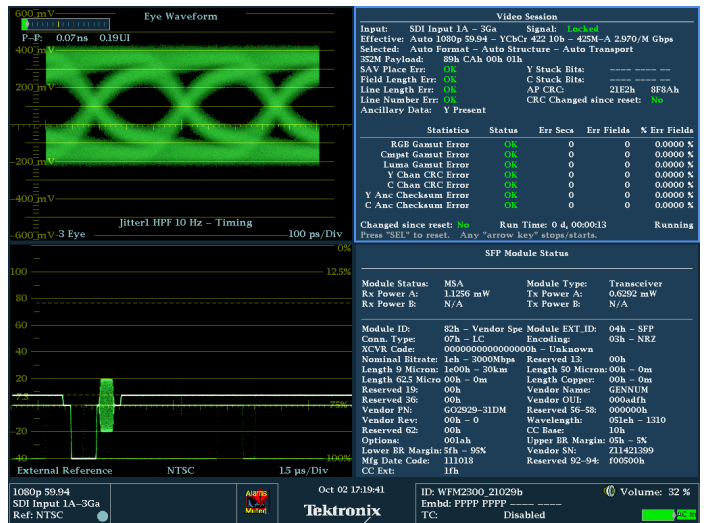
Wide variety of interface support

In modern broadcast facilities, there are a wide variety of video and audio signal formats that require multiple tools to monitor the signal. The WFM2300 is able to support SD/HD/3G-SDI, AES/EBU digital audio, composite black burst or tri-level sync reference signals and optical SDI (Option SFP), which decreases the need for taking multiple tools to diagnose an issue.

The SDI A input supports SD/HD/3G-SDI (Option 3G) video signals and provides monitoring of eye and jitter measurements. For a Dual Link SDI signal, both the SDI A and MULTI IN inputs are used.

The MULTI IN input also supports SDI, AES/EBU and LTC signals so that the user can easily determine the type of signal present on a cable.

The AES OUT and SDI OUT connectors are test signal outputs that can be configured as loop through output. The individual outputs for Audio and Video in conjunction with the SDI A and MULTI IN inputs allow the user to evaluate the variety of Audio/Video equipment that may require the audio/video signal with separate path.



Variety of Interfaces support (Eye display of 3G-SDI with Stress Loop, Video session, Composite sync waveform, SFP module Status).

The REF IN connector is used for receiving the analog composite or tri-level sync signal to measure the timing or check the sync status between sync signal and SDI signals. It is also used as a Genlock signal source for the generator function. In addition, the analog reference signal connected to this connector can be displayed as a waveform to quickly check the quality of the sync signal.

The optical SDI interface (Option SFP) is supported with a transceiver SFP module. The transceiver module provides both an input and output that can be used simultaneously. The output can be configured as loop output or as a test signal output. The SFP status display shows the module model name, mode, temperature and other status of the SFP module.

The STRESS LOOP connectors are a bi-directional passive signal path that can be used with a SDI test signal generated by the WFM2300 to test a signal path, or to add an additional cable length and interfering signal to a signal path to provide simple margin testing.

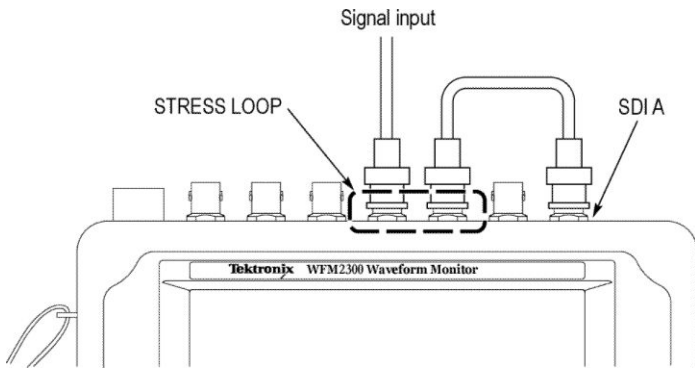


WFM2300 top panel connectors.

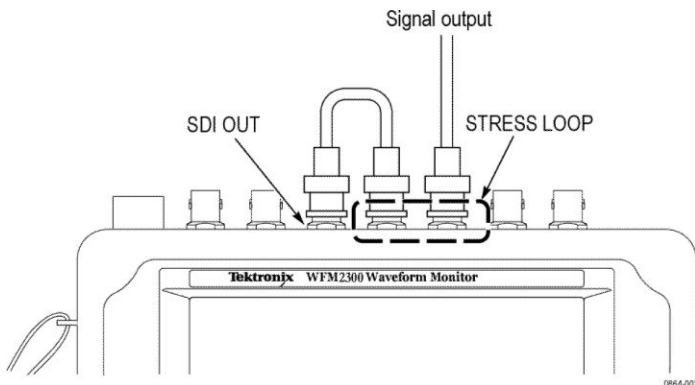
Quickly diagnose and isolate an installation issue

Within a broadcast facility, to maintain the SDI system it is important to ensure the health of the signal so that the clock and data are decoded correctly. CRC detection within the SDI signal can be used to count the CRC errors if present in the system. The measurement, however, may take minutes or hours to ensure that the signal is error free.

The cable stress/margin loop adds an additional 20 meters of cable and an interfering signal to the signal path. The use of the stress/margin loop along with CRC detection simplifies how to determine the cable margin of a system so that the user can quickly ensure they do not reach the "digital cliff" where the transmission error rate significantly increases.



Stress loop connections for a monitored signal.



Stress loop connections for a generated signal.

Alarms, quality statistics, and logging – thorough and fast content verification

The WFM2300 offers a variety of displays designed to show status at a glance, in addition to the status bar continually displayed at the bottom of the screen.

A comprehensive overview of the video content status is presented in the Video Session display. Offering a time-based compilation of information, this screen is ideal for presenting evidence of compliance after content screening. Information on input format and session time is presented, along with statistics on Error Detection and Handling (EDH) / Cyclic Redundancy Check (CRC) and gamut errors.

The Alarm Status display provides continuous information on the state of each condition currently being monitored by the instrument.

To support unattended monitoring and QC applications, as well as provide documentation for service-level agreements, these instruments maintain an error log of 10,000 events, which facilitates the detection and correction of problems. Log entries are recorded with date, time of day, and time code (VITC, LTC, ANC). The error log can be downloaded to a USB flash drive or through a network connection to .TXT or .HTM formats for easy record keeping and processing on spreadsheets or database software.

Alarm Status (Alarm MUTED) Page 1 of 5

Alarm	Status	Additional Information
HW Fault	OK	CPU_Power,Day_DRAM
Input Missing	OK	
Input Signal Lock	OK	
Reference Missing	OK	
Ref Lock	OK	
Ref Fmt Mismatch	OK	
Reference Genlock Unlocked	Open	Unlocked
RGB Gamut Error	OK	
Composite Gamut Error	OK	
Luma Gamut Error	OK	
Video Fmt Change	OK	
Video Fmt Mismatch	OK	
VID Ref Mismatch	OK	
Video Not HD	OK	
Dual Link Format Mismatch	OK	
Line Length Error	OK	
Field Length Error	OK	
SAV Place Error	OK	
SAV Place Error	OK	
Ancillary Data: Y Present	OK	

Active Log Filter: All 10/02/2013 Page 308 of 308

Source	Error Status	Timecode	Time
SDI 1A	Input Missing (Auto 1080p 59.94)		17:24:16
SDI 1A	Input Signal Lock (Auto 1080p 59.94)		17:24:17
SDI 1A	Field Length Error (Auto 1080p 59.94)		17:24:17
SDI 1A	Video Format Change (Auto 1080p 59.94)		17:24:18
Audio Input 1	Audio Signal Loss		17:24:18
Audio Channel 1	Audio Channel Loss (1-4)		17:24:23

Video Session

Input: SDI Input 1A - 3Ga Signal: 1080p 59.94
 Effective: Auto 1080p 59.94 - YCbCr 4:2:2 10b - 425M - A 2370/M Gbps
 Selected: Auto Format - Auto Structure - Auto Transport
 SSM FovMod: 69h CAh 00h 01h Y Stuck Bits: ---
 SAV Place Err: --- C Stuck Bits: ---
 Field Length Err: OK AF CRC: 21E2h 8FAh
 Line Length Err: OK CRC Changed since reset: Yes
 Ancillary Data: Y Present

Statistics	Status	Err Secs	Err Fields	% Err Fields
RGB Gamut Error	OK	0	0	0.0000 %
Comp Gamut Error	OK	0	0	0.0000 %
Luma Gamut Error	OK	0	0	0.0000 %
Y Chan CRC Error	OK	1	1	0.0208 %
C Chan CRC Error	OK	1	1	0.0208 %
Y Anc Checksum Error	OK	0	0	0.0000 %
C Anc Checksum Error	OK	0	0	0.0000 %

Changed since reset: Yes Run Time: 0 d, 00:01:27 Running
 Press "SEL" to reset. Any "arrow key" stops/starts.

Audio Session

AES Output	Embedded A	Signal Loss	Emb1,2					
Channel	1	2	3	4	5	6	7	8
Clip	0	0	0	0	0	0	0	0
Over	0	0	0	0	0	0	0	0
Load	1	2	4	0	3	2	5	0
Mute	0	0	0	0	0	0	0	0
Silence	0	0	0	0	0	0	0	0
Peak (dBFS)	-20.0	-20.0	-20.0	-20.0	-20.0	-20.0	-20.0	-20.0
High (dBFS)	-15.3	-15.3	-15.3	-15.3	-15.1	-15.1	-15.1	-15.1
Active bits	24	24	24	24	24	24	24	24
Leq (LKFS)	-1.2	-0.7	-1.1	1.7	0.3	-0.1	-0.1	-1.4
Leq (LKFS)	---	---	---	---	5.0	---	---	---

Page: 1 LKFS Inf: 7.4 Short: 0.0 Short Pd: 0.0 Chan: LCRIAR1f6

1080p 59.94 ID: WFM2300 21029b Volume: 32 %
 SDI Input 1A-3Ga Emb: PFFF PFFF
 Ref: NTSC TC: Disabled

Quad Tile display of Alarm Status, Error Log, Video and Audio Sessions.

Picture display – quick visual confirmation and precision content adjustment

For a qualitative view of the content, a full-color Picture display is offered, which can be displayed as a full-screen presentation. This display is compatible with all input formats and features automatic adjustment for aspect ratio and number of active lines.



Picture display with Safe Area Graticule.

You can select bright-up conditions that show the location of RGB or composite gamut errors on the Picture display. The Line Select mode shows the location of the line currently selected within the Picture display.

Users can choose from several Safe Action and Safe Title graticules on the Picture display which help editors and operators easily identify incorrectly positioned video content such as graphics, titles, or logos.

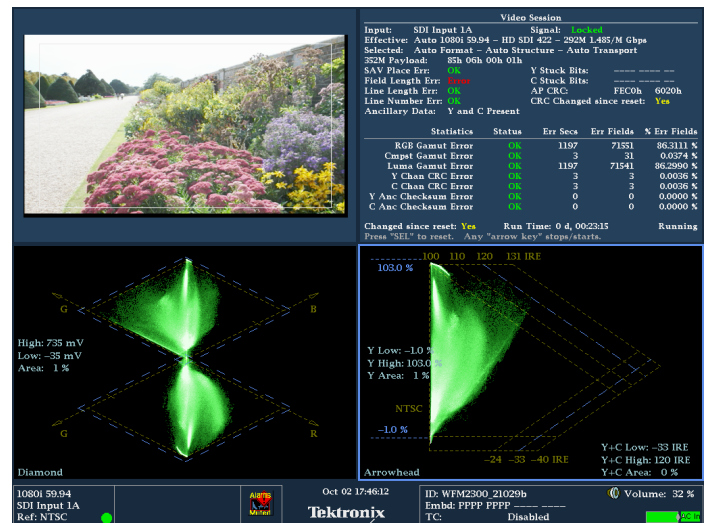
Graticule choices include the Safe Action and Safe Title graticules defined in SMPTE RP218, ITU, and ARIB standards, plus two sets of completely flexible, user-definable graticules. These graticules facilitate editing tasks and reduce the need for format conversions.

Patented Tektronix gamut displays – efficiently detect and allow correction of gamut problems

The Tektronix-patented Diamond, Split Diamond, and Arrowhead displays simplify the process of verifying gamut compliance and are ideal for colorists, editors, and operators to visualize whether the content is RGB or Composite Gamut compliant with a single glance. Plus, they are designed to help isolate the Out-of-Gamut component just as easily.

For SDI component content that is destined for broadcast in composite systems, the unique Tektronix Arrowhead display can be used to monitor Composite Gamut compliance without the need for a separate encoder. Within this display, a separate upper and lower luma-only gamut limit can be applied.

Each of these displays offers user-selectable gamut thresholds so that operators can set monitoring limits appropriate to their specific operation and include a preset for EBU-R103. You can also select bright-up conditions to see the location of gamut errors on the Picture display. In addition, gamut monitoring is fully integrated with the powerful alarm logging and reporting capabilities of the WFM2300.

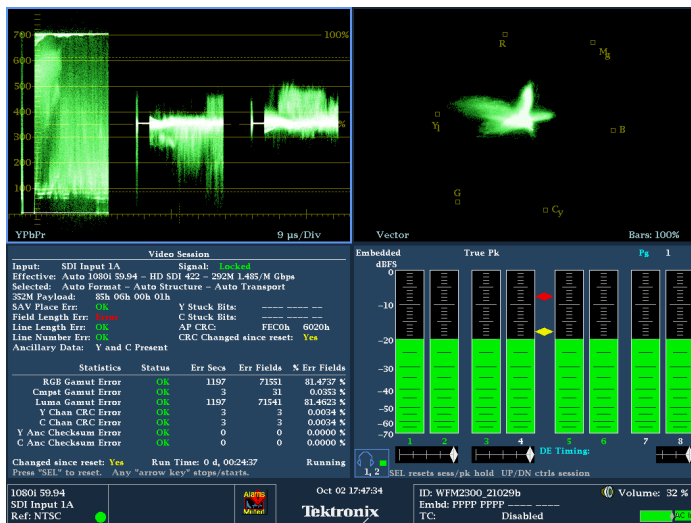


Diamond and Arrowhead gamut displays.

Quad Tile display – flexible monitoring configuration customized to suit your application

Tektronix offers multiple display options to suit a variety of applications that can be customized to the user's needs. The Quad Tile display provides flexibility to increase your productivity. The user can configure four different displays within the one instrument. A maximum of two traces can be displayed, along with picture, status, and audio bars to create flexible monitoring configurations that can be saved as presets for quick and easy recall. For instance, a waveform parade, vector, picture, and audio bar display can be configured to monitor the audio and video signal simultaneously within the Quad Tile display.

Unlike instruments with predetermined view combinations, Quad Tile lets you create a Quad Tile display tailored to your specific needs and work practices. Each tile can be configured to enable easy signal analysis such as multiple alarm and status screens, different Safe Area Graticules and cursors on each tile, and more.

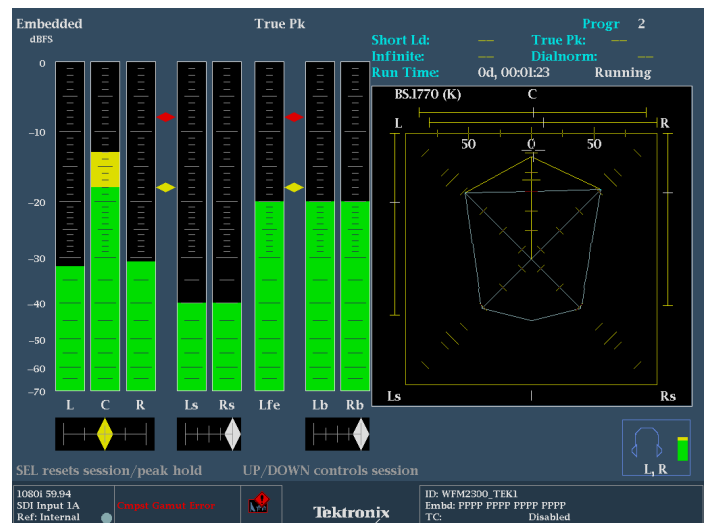


Quad Tile display allows for displays to be viewed simultaneously.

Digital audio and video monitoring in one instrument

The WFM2300 provides high-quality digital filtering and oversampling to ensure precise, reliable, and repeatable audio measurements. The instrument provides 16-channel embedded digital audio monitoring with Audio Bars, Lissajous Displays, Surround Display¹, and a headphone port for easy compliance verification of digital audio without the need for an additional piece of equipment. Flexible mapping of the embedded audio inputs to the audio bar displays allows for a variety of audio mixes to be supported from multiple stereo signals to surround and stereo support.

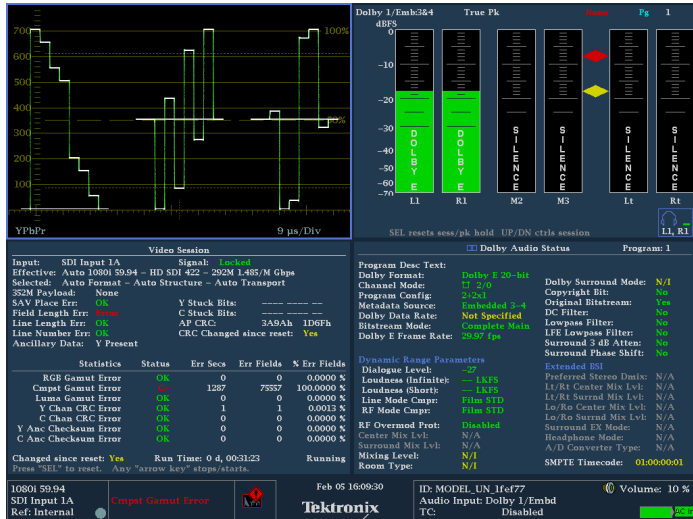
The Surround Sound¹ display provides intuitive graphical representation of channel interaction in a surround sound system. The Bars display provides indication for faults, audio levels, and provides indication of the presence of a Dolby format. The flexible Lissajous display allows the selection of any two audio channels.



Audio display with Surround Sound monitoring.

Specialized audio displays provide deeper inspection of the signal and make the WFM2300 instrument a comprehensive compact waveform and audio monitor. The audio session displays summarize levels, faults, and number of active bits for each channel. These instruments also feature Audio Control Packet Data and Channel Status displays.

With Option DBE, the Dolby Status display gives an in-depth view of integrated or VANC metadata and Dolby E Guard Band timing and synchronization. User-configurable thresholds for the Dolby E Guard Band timing measurement are available as well as triggering alarms based on their specific guard band parameters. The peak level data in the Dolby metadata is also displayed as a bar graph for checking the presence of the signal.



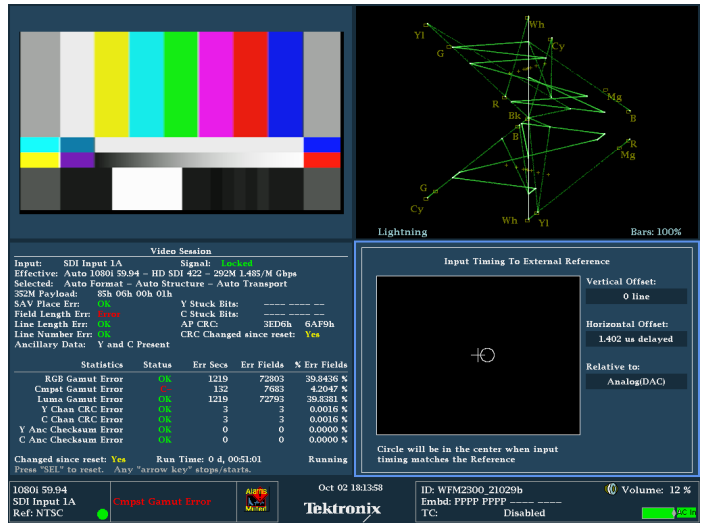
Optional Dolby E metadata monitoring.

Facility timing made easy

Synchronization is one of the most fundamental and critical procedures in a video facility. Every device in a system must be synchronized in order to successfully create, transmit, and recover video pictures and audio information. The intuitive Timing display clearly shows the timing offsets between HD and SD signals relative to the reference.

This Tektronix-patented Timing display makes facility timing easy through a simple graphical representation which shows the relative timing of the input signal and the reference signal (or a saved offset reference) on an X-Y axis. Simply adjust the timing of the equipment until the circle is within the center of the display for precise, direct measurements of vertical offset in number of lines and horizontal offset in μ s.

The Lightning display shows luma and chroma amplitudes and helps users verify component timing using a color-bar signal. The Tektronix-patented Bowtie display complements the timing measurement capability of the Lightning display. Using a special Bowtie test signal in component format, this display helps make precise, accurate measurements of interchannel amplitude and timing.



Timing and Lightning displays simplify timing tasks.

Troubleshooting signal paths

A simple test signal can be generated from the SDI output that produces 100% or 75% color bars along with pathological test signals with the ability to GenLock the test signal output to the External Reference Input. Audio test tones can be generated at the AES output or embedded in the SDI test signal output.

The user can change the test signal patterns, video format, whether the test signal is moving or static, audio test tone, and audio level. The moving circle allows the user to easily identify whether the test signal is active "live" or still and helps determine problems within the signal path that are caused by equipment freezing on the last frame. This can be useful for troubleshooting a signal path or piece of equipment without the need to carry an additional generator.



Generator Status display.

Superior data analysis capabilities for operators and engineers

The ANC Data Inspector provides an industry-leading solution to help broadcasters easily and accurately ensure that all required VANC data is present and correctly configured through an intuitive ANC data display.

In contrast to other solutions, the ANC Data Inspector enables operators to quickly and easily ensure that the VANC data is present and free of errors. When errors are detected, engineers are quickly guided to a more detailed view of the data packet content for further analysis.

Name	DID/SDID	Presence	Status	Location
S352M VPID	41/01	Present	OK	Field F2 / Line 9
S299-1 Ctrl Grp 2	E2/-	Present	OK	Field F2 / Line 8
S299-1 Aud Grp 2	E6/-	Present	OK	Field F2 / Line 31
S299-1 Aud Grp 1	E7/-	Present	OK	Field F2 / Line 31
S299-1 Ctrl Grp 1	E3/-	Present	OK	Field F2 / Line 8

Detail		View Mode: Watch List	Time Elapsed Since Last Reset: 0 d, 04:50:31
Format: SMPTE 299-1 Audio Data Grp 1 Presence: Present			
DID: e7 (2e7)	Type 1	Field: 2	Line: 31
DBN: 30 (230)	DC: 24 (218)	Link: --	Stream: C
Exp/Act Chksum: 118 / 118		Error: OK	

000	16b	101	140	19e	2cc	20f	140	19e	2cc	20f	140	20f	1df	28e	120	21b
016	1e3	20f	17a	161	244	1e9	1ba	260								
032																

ANC Data Inspector provides detailed content analysis.

Closed Caption (CEA708/608) and individual Teletext subtitles can be simultaneously decoded and displayed within the Picture display. Teletext subtitle pages can be decoded in either WST or OP47 format.

The Auxiliary Data Status display provides summary information on Active Format Description (AFD) per SMPTE 2016, Video Index Aspect Ratio, Wide Screen Signaling (WSS), V-Chip, TSID, CGMS-A, Broadcast Flag, CEA708/608 Closed Caption, Teletext, and Timecode information.

Auxiliary Data Status

Anc Data: **Y and C Present**

CEA608: 5334 CDP (ANC) Services: CCI--- TXT--- XDS: Not detected

CEA708: 5334 CDP Services: CCI--- RP207: ---

Teletext: Not detected

CDP: Present Frn Rate: 29.97 Data Count 608: 4 708: 0

V-Chip Rating: Not detected

TSID: Not detected

CGMS-A: Not detected

Broadcast Flag: Not detected

TC Flags: 00-1 C1-0 DBB: 0000 BG Flags: 0 V-Analog 0 00-1 C1-0 00000000

SMPTE 2016 AFD: 169 IS - Code is 111 - AR is 169

Desc: Full Frame 169 full 4:3 center in 169 Frame

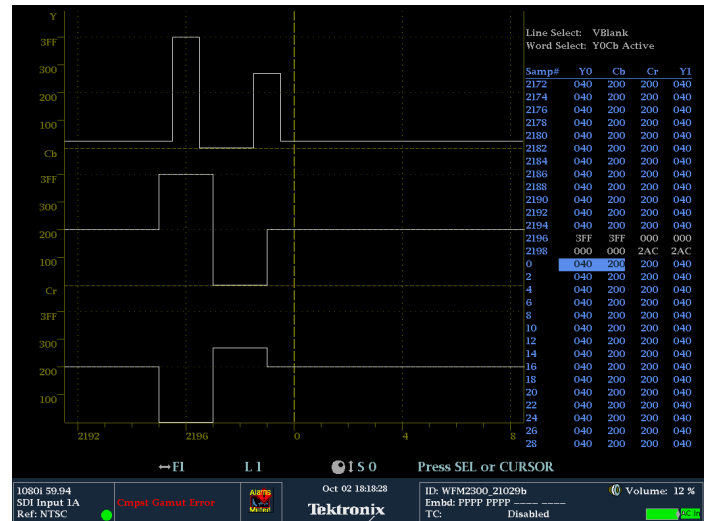
Bar 1: No valid bar data found

Bar 2: No valid bar data found

Monitoring of Ancillary data (Closed Caption, Time Code, and AFD) using Aux Data Status.

Today there is a wide array of metadata that provides information to a variety of equipment through the processing chain. Monitoring of this metadata is critical to ensure that the processing equipment correctly handles the signal. For instance, correct format of the AFD ensures that the aspect ratio on the display is correctly formatted and the automated AFD graticule is available for the Picture display of the WFM2300 along with the binary data and text description for easy monitoring.

The Datalist display provides detailed information on the actual data values in HD/SD-SDI and 3G-SDI (with Option 3G) input signals. Users can easily use this display to locate protocol errors in the input signals.



Datalist display provides detailed pixel-by-pixel information.

The right side of the display shows the data values in hexadecimal, decimal, or binary format and uses the following color coding for easy identification of data types and errors:

- Green – Active video data
- Blue – Data in horizontal or vertical blanking intervals
- White – EAV, SAV, and other reserved words
- Yellow – Data outside nominally allowed values
- Red – Data with illegal values

The left side of display shows uninterpolated digital values plotted against sample numbers as a digital waveform. You can configure this unique display in either Video mode or Data mode.

In Video mode, the display shows the Y, Cb, Cr values aligned temporally, but offset vertically. Like the waveform display, you can configure the display to show 1, 2, or all 3 components.

Supported formats

The WFM2300 waveform monitor accepts a wide variety of input signal formats and external references. The monitor will automatically detect the signal format and establish the appropriate settings for the various displays.

Video input and external reference supported formats

Setting	STD SD	STD HD	External reference inputs											
			Bi-level sync		Tri-level 720p			Tri-level 1080p		Tri-level 1080i			1080 SF	
			NTSC	PAL	50 Hz	59.94 Hz	60 Hz	23.98 Hz	24 Hz	50 Hz	59.94 Hz	60 Hz	23.98 Hz	24 Hz
BT601 483i, 59.94 Hz (525)	x		x			x						x		
BT601 576i, 50 Hz (625)	x			x	x					x				
296M 720p, 23.98 Hz		x	x			x		x			x		x	
296M 720p, 24 Hz		x					x		x			x		x
296M 720p, 25 Hz		x		x	x					x				
296M 720p, 29.97 Hz		x	x			x					x			
296M 720p, 30 Hz		x					x					x		
296M 720p, 50 Hz		x		x	x					x				
296M 720p, 59.94 Hz		x	x			x					x		x	
296M 720p, 60 Hz		x					x		x			x		x
240M 1035i, 59.94 Hz		x	x			x					x			
240M 1035i, 60 Hz		x					x		x			x		x
274M 1080i, 50 Hz		x		x	x					x				
274M 1080i, 59.94 Hz		x	x			x					x			
274M 1080i, 60 Hz		x					x		x			x		x
274M 1080p, 23.98 Hz		x	x			x		x			x		x	
274M 1080p, 24 Hz		x					x		x			x		x
274M 1080p, 25 Hz		x		x	x					x				
274M 1080p, 29.9 Hz		x	x			x					x			
274M 1080p, 30 Hz		x					x					x		
274M 1080sf, 23.9 Hz		x	x			x		x			x		x	
274M 1080sf, 24 Hz		x					x		x			x		x
274M 1080sf, 25 Hz		x		x	x					x				
274M 1080sf, 29.9 Hz		x	x			x					x			
274M 1080sf, 30 Hz		x					x					x		

Dual Link supported formats

Format	Sample structure	Frame/field rates
1920 x 1080	4:2:2 YCbCr 10 bit	60, 60/1.001, and 50 progressive
	4:4:4 RGB	30, 30/1.001, 25, 24 and 24/1.001 progressive, PsF 60, 60/1.001, and 50 fields interlaced
	4:4:4:4 RGB +A 10 bit	
	4:4:4 RGB 12 bit	
	4:4:4 YCbCr 10 bit	
	4:4:4:4 YCbCr +A 10 bit	
	4:4:4 YCbCr 12 bit	
	4:2:2 YCbCr 12 bit	
	4:2:2:4 YCbCr +A 12 bit	
2048 x 1080	4:4:4 RGB	30, 30/1.001, 25, 24, and 24/1.001 progressive, PsF
	4:4:4:4 RGB +A 10 bit	
	4:4:4 RGB 12 bit	
	4:4:4 YCbCr 10 bit	
	4:4:4:4 YCbCr +A 10 bit	
	4:4:4 YCbCr 12 bit	
	4:2:2 YCbCr 12 bit	
	4:2:2:4 YCbCr +A 12 bit	
	4:4:4 XYZ 12 bit	

3G-SDI Single Link supported formats

Format	Sample structure	Frame/field rates
1920 x 1080	4:2:2 YCbCr 10 bit Level A and level B	50, 59.94, 60 progressive
	4:2:2 YCbCr 10 bit Level B	23.98, 23.98sF, 24, 24sF, 25, 25sF, 29.97, 29.97sF, 30, 30sF progressive 50, 59.94, 60 interlaced
	4:4:4 YCbCr 10 bit 4:4:4:4 YCbCrA 10 bit Level B	
	4:4:4 RGB 10 bit 4:4:4:4 RGB +A 10 bit Level B	
	4:4:4 RGB 12 bit Level B	
	4:4:4 YCbCr 12 bit 4:2:2:4 YCbCr +A 12 bit Level B	
	4:4:4 YCbCr 12 bit Level B	
	2048 x 1080	
4:4:4 XYZ 12 bit Level B		
2 x HD 1920 x 1080	4:2:2 YCbCr 10 bit Level B	23.98, 23.98sF, 24, 24sF, 25, 25sF, 29.97, 29.97sF, 30, 30sF progressive 50, 59.94, 60 interlaced
2 x HD 1280 x 720	4:2:2 YCbCr 10 bit Level B	23.98, 24, 25, 29.97, 30, 50, 59.94, 60 progressive

Video signal generation and genlock signal supported formats

Output SDI Format	External reference inputs											
	Bi-level sync		Tri-level 720p			Tri-level 1080p		Tri-level 1080i			1080 SF	
Setting	NTSC	PAL	50 Hz	59.94 Hz	60 Hz	23.98 Hz	24 Hz	50 Hz	59.94 Hz	60 Hz	23.98 Hz	24 Hz
525i, 59.94 Hz	x			x		x			x		x	
625i, 50 Hz		x	x					x				
720p, 50 Hz		x	x					x				
720p, 59.94 Hz	x			x		x			x		x	
720p, 60 Hz					x		x			x		x
1080i, 50 Hz		x	x					x				
1080i, 59.94 Hz	x			x		x			x		x	
1080i, 60 Hz					x		x			x		x
1080p, 23.98 Hz	x			x		x			x		x	
1080p, 24 Hz					x		x			x		x
1080p, 25 Hz		x	x					x				
1080p, 29.97 Hz	x			x		x			x		x	
1080p, 30 Hz					x		x			x		x
1080p, 50 Hz		x	x					x				
1080p, 59.94 Hz	x			x		x			x		x	
1080p, 60 Hz					x		x			x		x
1080sf, 23.98 Hz	x			x		x			x		x	
1080sf, 24 Hz					x		x			x		x

Characteristics

All characteristics apply to all models unless noted otherwise.

SDI IN input

Inputs	SDI, Auto-detection of 3G, Dual Link, HD, and SD signals (Option 3G required for 3G formats)
Input type	BNC, internally terminated 75 Ω
Input level	800 mV _{p-p} , $\pm 10\%$
Input equalization	
270 Mb/s	Up to 315 m of type 1694A cable
1.5 Gb/s	Up to 170 m of type 1694A cable
3 Gb/s	Up to 115 m of type 1694A cable
Return loss	>15 dB from 1MHz to 1.5GHz, power on or off >10 dB from 1.5 GHz to 3 GHz, power on or off

MULTI IN input

Inputs	SDI, Auto-detection of 3G, Dual Link, HD, and SD signals (Option 3G required for 3G formats), AES/EBU, Linear Time Code
Input type	BNC, Auto termination (SDI, AES/EBU: 75 Ω , LTC: >1 k Ω)
SDI input level	800 mV _{p-p} , $\pm 10\%$
SDI input equalization	
270 Mb/s	Up to 315 m of type 1694A cable
1.5 Gb/s	Up to 170 m of type 1694A cable
3 Gb/s	Up to 115 m of type 1694A cable
AES/EBU input	48 kS/s, AES 3-ID, ANSI/SMPTE 276M
AES/EBU input level	0.5 V _{p-p} to 2 V _{p-p}
LTC input	Linear Time Code per SMPTE 12M-1
LTC input level	0.2 V _{p-p} to 5 V _{p-p}
Return loss	>15 dB from 1MHz to 1.5GHz, power on or off >10 dB from 1.5 GHz to 3 GHz, power on or off

STRESS LOOP loop through

Input type	2 × BNC passive loop through, 75 Ω transmission
Simulated cable	20 m, Belden 1694A
Cable margin	Variable amplitude interfering signal (SMPTE292)

SDI OUT output

Output	SDI Switched Output. Selectable, active input, or test signal
--------	---

AES OUT output

Output	48 kS/s, AES 3-ID, ANSI/SMPTE 276M
Output type	BNC, 75 Ω
Output level	0.9 V _{p-p} to 1.1 V _{p-p} into 75 Ω

External reference

Sync formats	NTSC, PAL, and tri-level sync
Input type	BNC, 75 Ω internally terminated
Return loss	>40 dB to 6 MHz >35 dB to 30 MHz
Lock range	±50 ppm

Serial digital waveform vertical characteristics**Vertical measurement accuracy**

1x gain	±0.5% of 700 mV full scale
5x gain	±0.2% of 700 mV full scale

Gain	1x, 5x, variable range 0.25x to >7.5x
------	---------------------------------------

Frequency response

SD	Luminance (Y) channel ±0.5% to 5.75 MHz
	Color Difference channels (Pb, Pr) ±0.5% to 2.75 MHz
HD	Luminance (Y) channel ±0.5% to 30 MHz
	Difference channels (Pb, Pr) ±0.5% to 15 MHz
3G	Luminance (Y) channel ±0.5% to 60 MHz
	Difference channels (Pb, Pr) ±0.5% to 30 MHz

Waveform horizontal characteristics

Sweep timing accuracy $\pm 0.5\%$

Sweep linearity $\pm 0.2\%$

Audio characteristics

Level meter resolution
0.056 dB steps at 30 dB scale from full scale to -20 dBFS
0.20 dB steps at 70 dB scale for signals above -20 dBFS

Meter ballistics True peak, PPM type 1, PPM type 2, BBC PPM

Defined/programmable level detection Mute, clip, user-programmable silence, over

Level meter accuracy ± 0.1 dB from 20 Hz to 20 kHz, 0 to -40 dBFS sine wave, Peak Ballistic mode

SDI generator characteristics

Test signals 100% Color Bar, 75% Color Bar, Pathological Signal

Output format

525i	59.94 Hz
625i	50 Hz
720p	50 Hz, 59.94 Hz, 60 Hz
1080i	50 Hz, 59.94 Hz, 60 Hz
1080p	23.98 Hz, 24 Hz, 25 Hz, 29.97 Hz, 30 Hz, 50 Hz, 59.94 Hz, 60 Hz
1080sF	23.98 Hz, 24 Hz

Reference input signal NTSC/PAL black burst
HDTV tri-level sync (720p, 1080i)

Lock range ± 30 ppm

Genlock time adjustment

Vertical offset range \pm half of the frame length where the frame length is the shorter frame of the generated video or reference signal

Horizontal offset range ± 32 μ s

Resolution: 37 ns

Accuracy: 100 ns of the setting

Power adapter

Input voltage	Accepts 100 to 240 V AC \pm 10% 50/60 Hz
----------------------	--

Output voltage	19 V DC nominal
-----------------------	-----------------

Input voltage

Voltage range	19 V DC nominal 10.75 to 20 V DC min-max operating
----------------------	---

Supply connection	2.5/5.5 mm DIN
--------------------------	----------------

Power consumption	24 W typical 35 W max
--------------------------	--------------------------

Surge	20 A at 12 V
--------------	--------------

Fuse rating	4 A, internal self-resetting fuse
--------------------	-----------------------------------

Transient, over, and reverse voltage	Reverse- and over-voltage protected to \pm 30 V DC The unit may power itself down in the presence of high transient voltages. This prevents damage to the unit and is not a fault
---	--

Physical characteristics

Dimensions	Including boot, excluding projections
-------------------	---------------------------------------

Height	8.5 in. (216 mm)
---------------	------------------

Width	8.2 in. (208 mm)
--------------	------------------

Depth	1.4 in. (36 mm)
--------------	-----------------

Weight	Including boot, excluding projections
---------------	---------------------------------------

Net (with battery)	4 lb. (1.8 kg)
---------------------------	----------------

Net (without battery)	3 lb. (1.4 kg)
------------------------------	----------------

Environmental

Temperature	
--------------------	--

Operating	0 °C to +40 °C
------------------	----------------

Nonoperating	-20 °C to +60 °C
---------------------	------------------

Humidity	
-----------------	--

Operating	20% to 80% relative humidity at up to +40 °C, noncondensing
------------------	---

Nonoperating	5% to 90% relative humidity at up to +60 °C, noncondensing
---------------------	--

Altitude	
-----------------	--

Operating	Up to 10,000 ft. (3,000 m)
------------------	----------------------------

Nonoperating	Up to 40,000 ft. (12,000 m)
---------------------	-----------------------------

Ordering information

Models

WFM2300	Portable 3G/DL/HD/SD-SDI ² Waveform Monitor/Generator, with Eye/Jitter measurement, Li-Ion Battery Includes: Installation and Safety Instructions (Tektronix part number 071-3205-xx), WFM200BA Li-Ion Rechargeable Battery Pack, WFM200BA Li-Ion Rechargeable Battery Pack Instructions (Tektronix part number 075-1041-xx), AC Power Adapter (Tektronix part number 119-7910-xx), Power Plug ³ (See Power plug options.)
----------------	---

Product options

WFM2300 options

You must specify a power plug option when ordering.

3G	Add support for 3G-SDI signal formats (Level A and Level B)
DATA	Add Ancillary Data monitoring (including decoding of 708 and 608 Closed Captions, Teletext and OP47 Subtitles, AFD, and CGMS-A), and ANC Data Inspector
DBE	Add Dolby E analysis
LOUD	Add Audio Loudness monitoring capabilities including Loudness Meter
SFP	Add Optical Input/Output SDI module support

Power plug options

Opt. A0	North America power plug (115 V, 60 Hz)
Opt. A1	Universal Euro power plug (220 V, 50 Hz)
Opt. A2	United Kingdom power plug (240 V, 50 Hz)
Opt. A3	Australia power plug (240 V, 50 Hz)
Opt. A5	Switzerland power plug (220 V, 50 Hz)
Opt. A6	Japan power plug (100 V, 110/120 V, 60 Hz)
Opt. A10	China power plug (50 Hz)
Opt. A11	India power plug (50 Hz)
Opt. A12	Brazil power plug (60 Hz)
Opt. A99	No power cord or AC adapter

² Option 3G is required for 3G-SDI support.

³ If you ordered Option A99, no power cord is provided.

Service options

Opt. C3	Calibration Service 3 Years
Opt. C5	Calibration Service 5 Years
Opt. D3	Calibration Data Report 3 Years (with Opt. C3)
Opt. D5	Calibration Data Report 5 Years (with Opt. C5)
Opt. G3	Complete Care 3 Years (includes loaner, scheduled calibration, and more)
Opt. G5	Complete Care 5 Years (includes loaner, scheduled calibration, and more)
Opt. R3	Repair Service 3 Years (including warranty)
Opt. R3DW	Repair Service Coverage 3 Years (includes product warranty period). 3-year period starts at time of customer instrument purchase. This option is available if the instrument is within product warranty. It is not available once instrument exits warranty period.
Opt. R5	Repair Service 5 Years (including warranty)
Opt. R5DW	Repair Service Coverage 5 Years (includes product warranty period). 5-year period starts at time of customer instrument purchase. This option is available if the instrument is within product warranty. It is not available once instrument exits warranty period.

WFM230UP options

Post sale upgrades for the WFM2300.

3G	Add support for 3G-SDI signal formats (Level A and Level B)
DATA	Add Ancillary Data monitoring (including decoding of 708 and 608 Closed Captions, Teletext and OP47 Subtitles, AFD, and CGMS-A), and ANC Data Inspector
DBE	Add Dolby E analysis
LOUD	Add Audio Loudness monitoring capabilities including Loudness Meter
SFP	Add Optical Input/Output SDI module support

Optional accessories

WFM200BA	Rechargeable battery pack for replacement, includes instructions manual
WFM200BC	External battery charger, includes instructions manual
WFM200FSC	Soft carry case for the waveform monitor



WFM200BC External Battery Charger with WFM200BA Rechargeable Battery Pack.



WFM200FSC soft carry case.



Tektronix is registered to ISO 9001 and ISO 14001 by SRI Quality System Registrar.

ASEAN / Australasia (65) 6356 3900
Belgium 00800 2255 4835*
Central East Europe and the Baltics +41 52 675 3777
Finland +41 52 675 3777
Hong Kong 400 820 5835
Japan 81 (3) 6714 3010
Middle East, Asia, and North Africa +41 52 675 3777
People's Republic of China 400 820 5835
Republic of Korea 001 800 8255 2835
Spain 00800 2255 4835*
Taiwan 886 (2) 2722 9622

Austria 00800 2255 4835*
Brazil +55 (11) 3759 7627
Central Europe & Greece +41 52 675 3777
France 00800 2255 4835*
India 000 800 650 1835
Luxembourg +41 52 675 3777
The Netherlands 00800 2255 4835*
Poland +41 52 675 3777
Russia & CIS +7 (495) 6647564
Sweden 00800 2255 4835*
United Kingdom & Ireland 00800 2255 4835*

Balkans, Israel, South Africa and other ISE Countries +41 52 675 3777
Canada 1 800 833 9200
Denmark +45 80 88 1401
Germany 00800 2255 4835*
Italy 00800 2255 4835*
Mexico, Central/South America & Caribbean 52 (55) 56 04 50 90
Norway 800 16098
Portugal 80 08 12370
South Africa +41 52 675 3777
Switzerland 00800 2255 4835*
USA 1 800 833 9200

* European toll-free number. If not accessible, call: +41 52 675 3777

Updated 10 April 2013

For Further Information. Tektronix maintains a comprehensive, constantly expanding collection of application notes, technical briefs and other resources to help engineers working on the cutting edge of technology. Please visit www.tektronix.com.

Copyright © Tektronix, Inc. All rights reserved. Tektronix products are covered by U.S. and foreign patents, issued and pending. Information in this publication supersedes that in all previously published material. Specification and price change privileges reserved. TEKTRONIX and TEK are registered trademarks of Tektronix, Inc. All other trade names referenced are the service marks, trademarks, or registered trademarks of their respective companies.



14 Oct 2013

2PW-29450-0

www.tektronix.com

Tektronix[®]

